

From the Amazon tipping point to the boiling age

**From the Amazon tipping point(s)
to the boiling age**

Yes, Two Tipping Points

1. Shift from Rainforest > Savannah

The screenshot shows the MAAP website interface. At the top, there are logos for Amazon Conservation and Conservación Amazónica (ACCA), and the MAAP logo. A search bar is in the top right corner. Below the logos is a navigation menu with links for HOME, ARCHIVE, SECTORS, SYNTHESIS, INTERACTIVE, COUNTRIES, OTHER, and ABOUT MAAP. The main content area features the article title 'MAAP #164: AMAZON TIPPING POINT - WHERE ARE WE?' with a sub-header listing countries: PERU, BRAZIL, COLOMBIA, ECUADOR, BOLIVIA, SYNTHESIS, MAPS SEP 16, 2022. There are social media sharing options for Print, Email, Share 20, Tweet, and More. The article text discusses the Amazon's tipping point, mentioning Tom Lovejoy and the impact of deforestation. A map of the Amazon basin is shown on the right, with a legend indicating Total Deforestation (red), Forest (green), and Non-Forest (grey).

AMAZON CONSERVATION ACCA CONSERVACIÓN AMAZÓNICA

Monitoring of the Andean Amazon Project

HOME · ARCHIVE · SECTORS · SYNTHESIS · INTERACTIVE · COUNTRIES · OTHER · ABOUT MAAP

MAAP #164: AMAZON TIPPING POINT - WHERE ARE WE?

PERU, BRAZIL, COLOMBIA, ECUADOR, BOLIVIA, SYNTHESIS, MAPS SEP 16, 2022

Download PDF of this article

[Print](#) [Email](#) [Share 20](#) [Tweet](#) [More](#)

It is increasingly reported that the largest rainforest in the world, the Amazon, is rapidly approaching a **tipping point**.

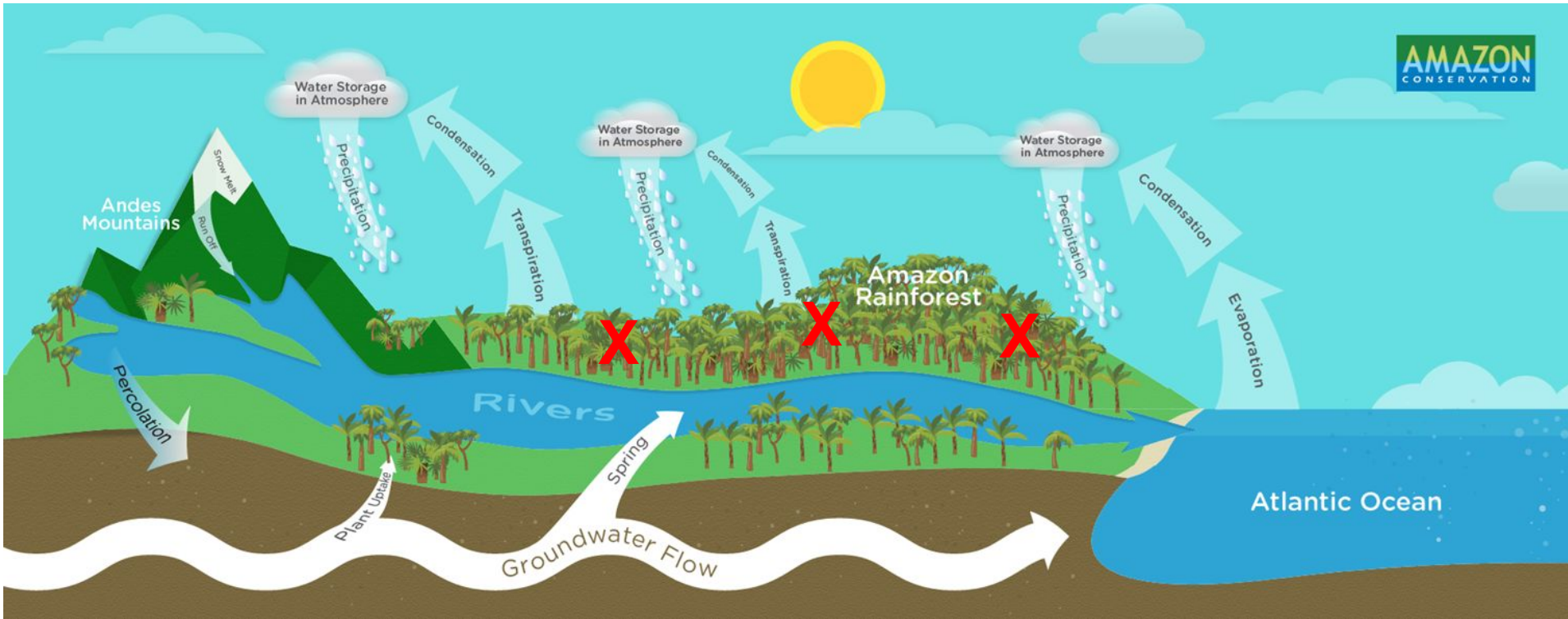
As repeatedly highlighted by the late **Tom Lovejoy** (see Acknowledgements), this tipping point is where parts of the rainforest will convert into drier ecosystems due to disrupted precipitation patterns and more intense dry seasons, both exacerbated by deforestation.

The Amazon generates much of its own rainfall by recycling water as air passes from its major source in the Atlantic Ocean. Thus, high deforestation in the eastern Amazon may lead to downwind impacts in the central and western Amazon (see Background section below).

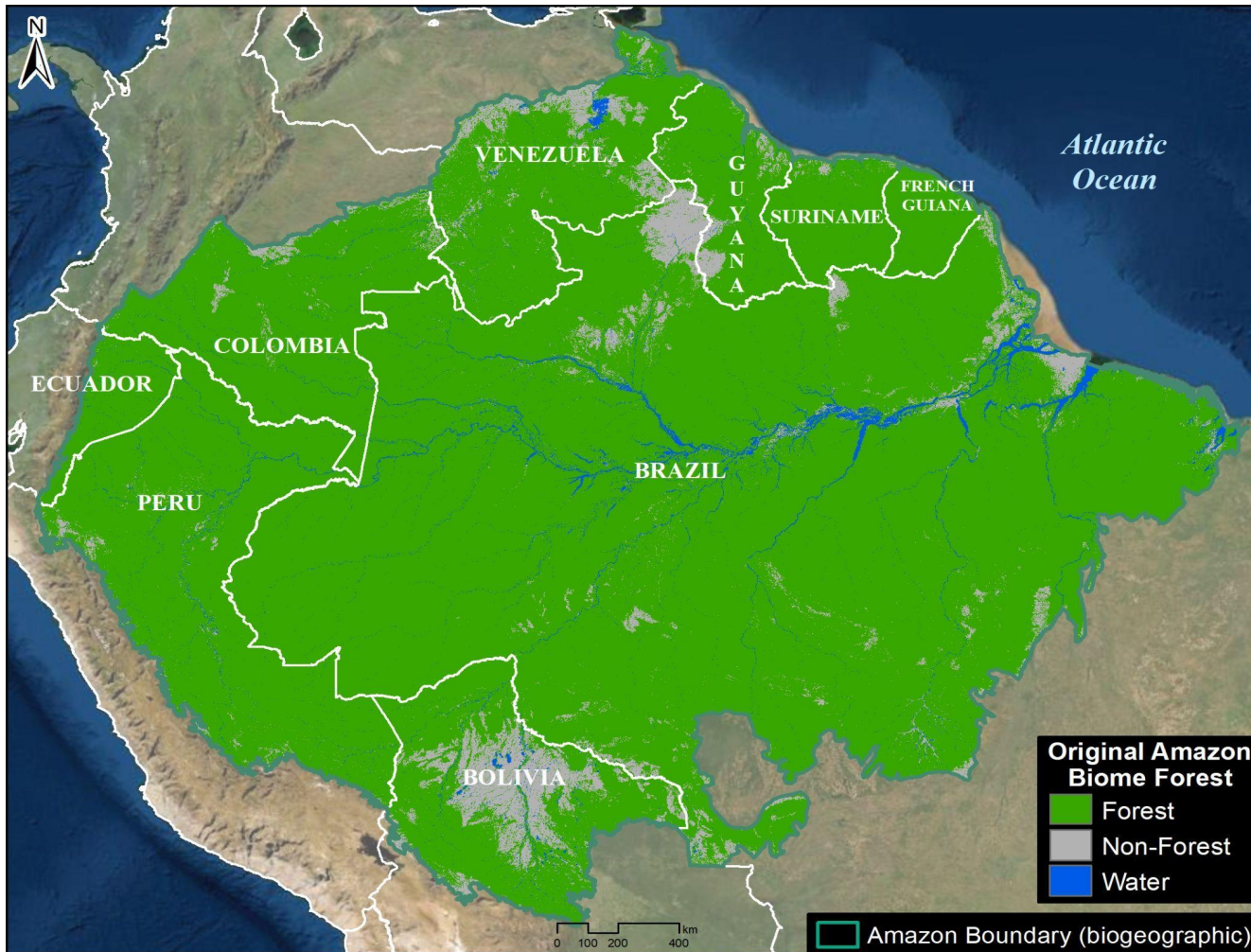
The scientific literature indicates this tipping point could be **triggered at 25%** Amazon forest loss, in conjunction with climate change impacts.

The literature, however, is less clear on the critical first part of the tipping point equation: **how much of the Amazon has already been lost?**

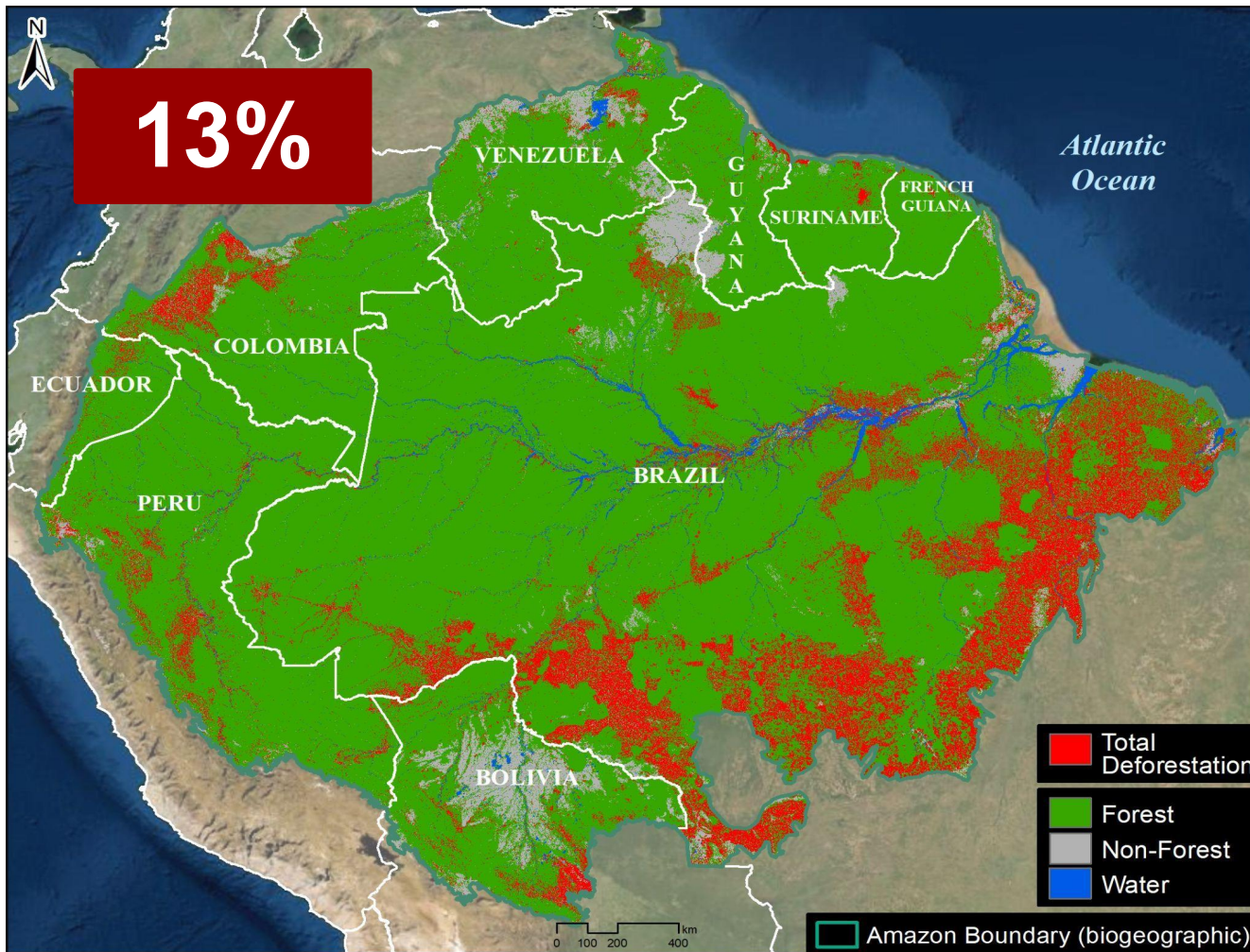
Legend:
Total Deforestation (Red)
Forest (Green)
Non-Forest (Grey)



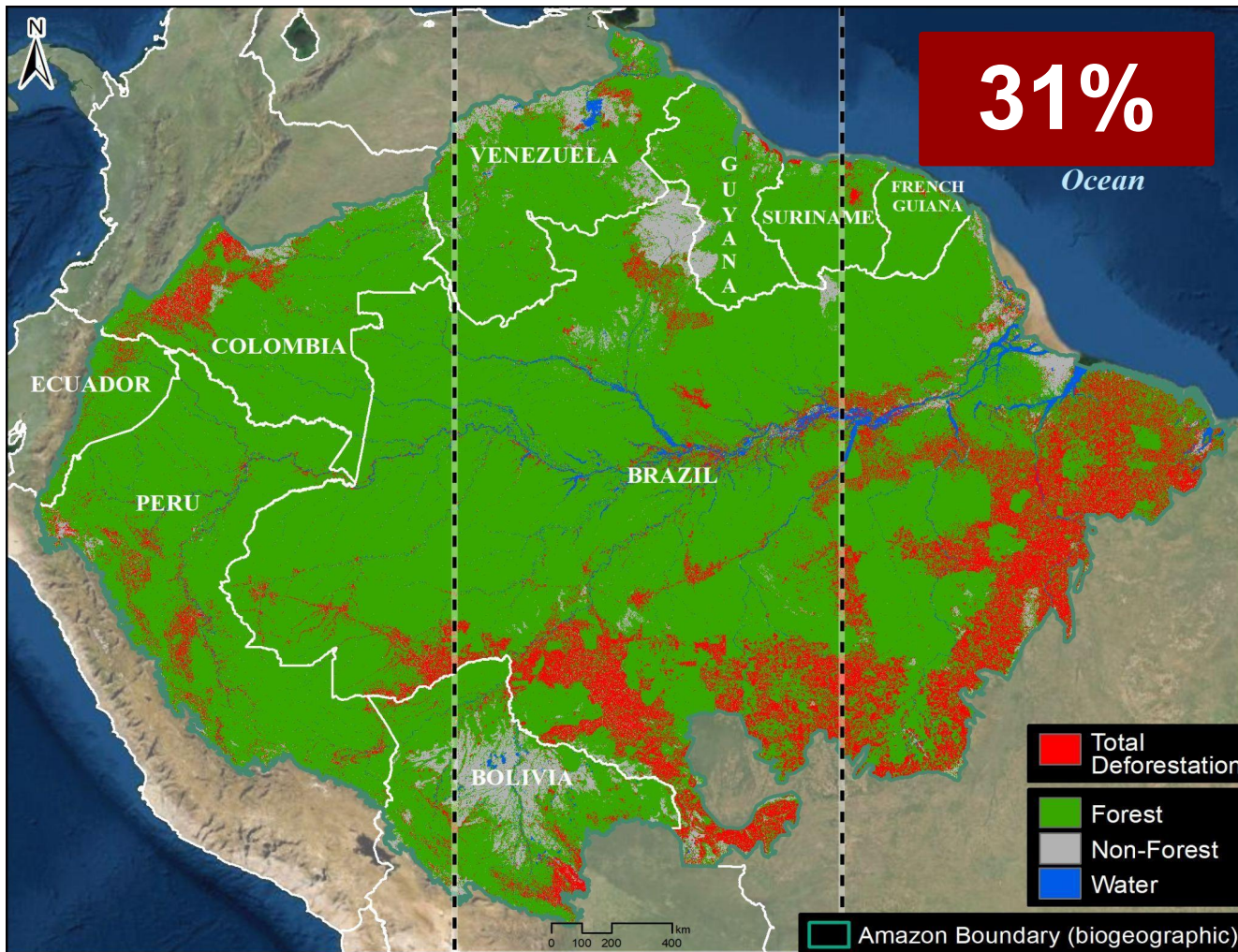
Threshold >25% ?



Original Amazon



**Current Amazon
<25% Threshold**



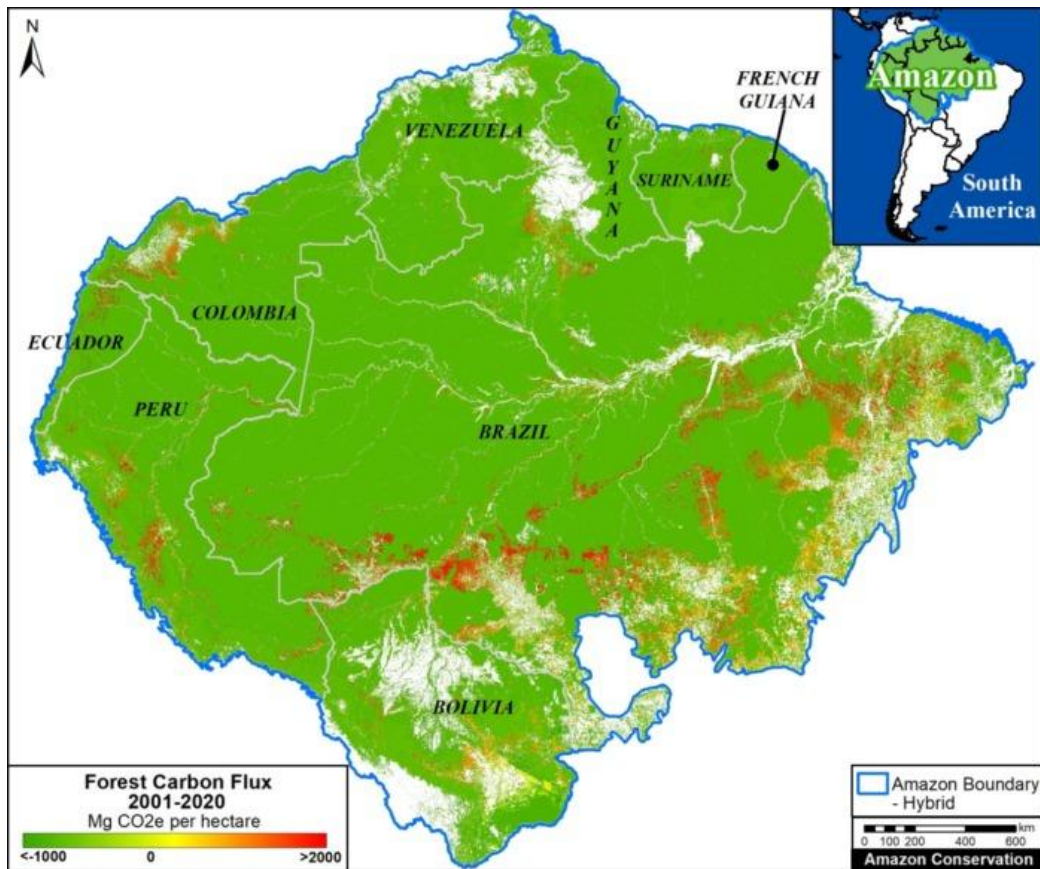
Eastern Amazon
>25% Threshold

Yes, Two Tipping Points

1. Shift from Rainforest > Savannah

2. Carbon

The screenshot shows the MAAP website interface. At the top, there are logos for Amazon Conservation and Conservación Amazónica, along with a search bar and a language selector set to 'ESPAÑOL'. Below the navigation bar, the article title 'MAAP #144: THE AMAZON & CLIMATE CHANGE: CARBON SINK VS CARBON SOURCE' is displayed, followed by the subtitle 'PERU, BRAZIL, COLOMBIA, ECUADOR, BOLIVIA, CLIMATE CHANGE, SYNTHESIS, MAPS AUG 30, 2021'. There are social media sharing options for Print, Share (72), Tweet, and More. The main text discusses recent scientific studies and highlights that the Brazilian Amazon has become a net carbon source, while the total Amazon remains a net carbon sink. A map of the Amazon basin is shown on the right, with a legend for 'Forest Carbon Flux 2001-2020' in Mg CO₂e per hectare. The map uses a color scale from green (sink) to red (source). Countries labeled include Venezuela, French Guiana, Guyana, Suriname, Ecuador, Colombia, Peru, Brazil, and Bolivia. An inset map shows the Amazon's location in South America.



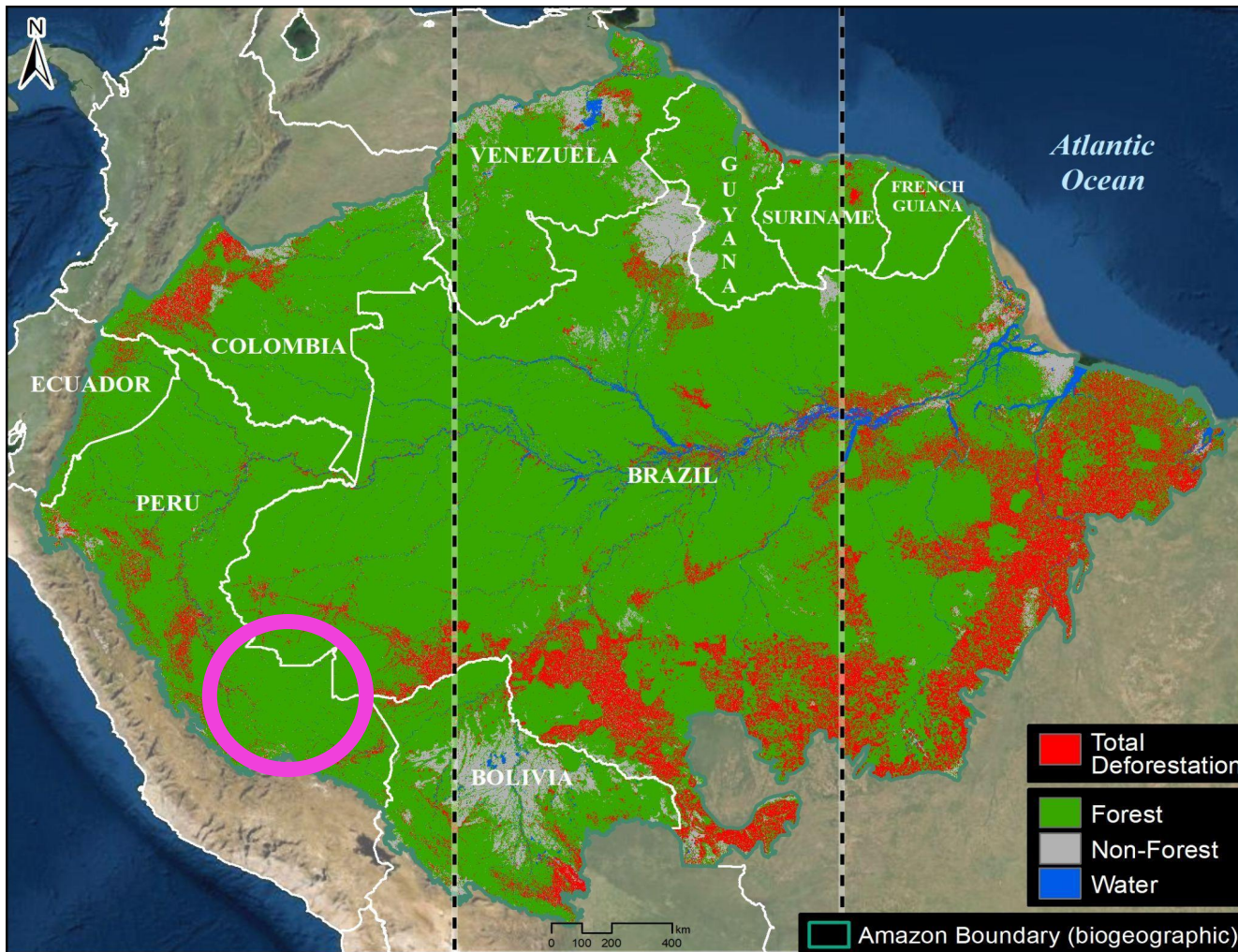
**Brazilian Amazon:
Carbon Source**

**All Amazon:
Carbon Sink**

Yes, Two Tipping Points

1. Shift from Rainforest > Savannah
2. Carbon

So, how do we avoid the tipping points?



So, how do we avoid the tipping points?

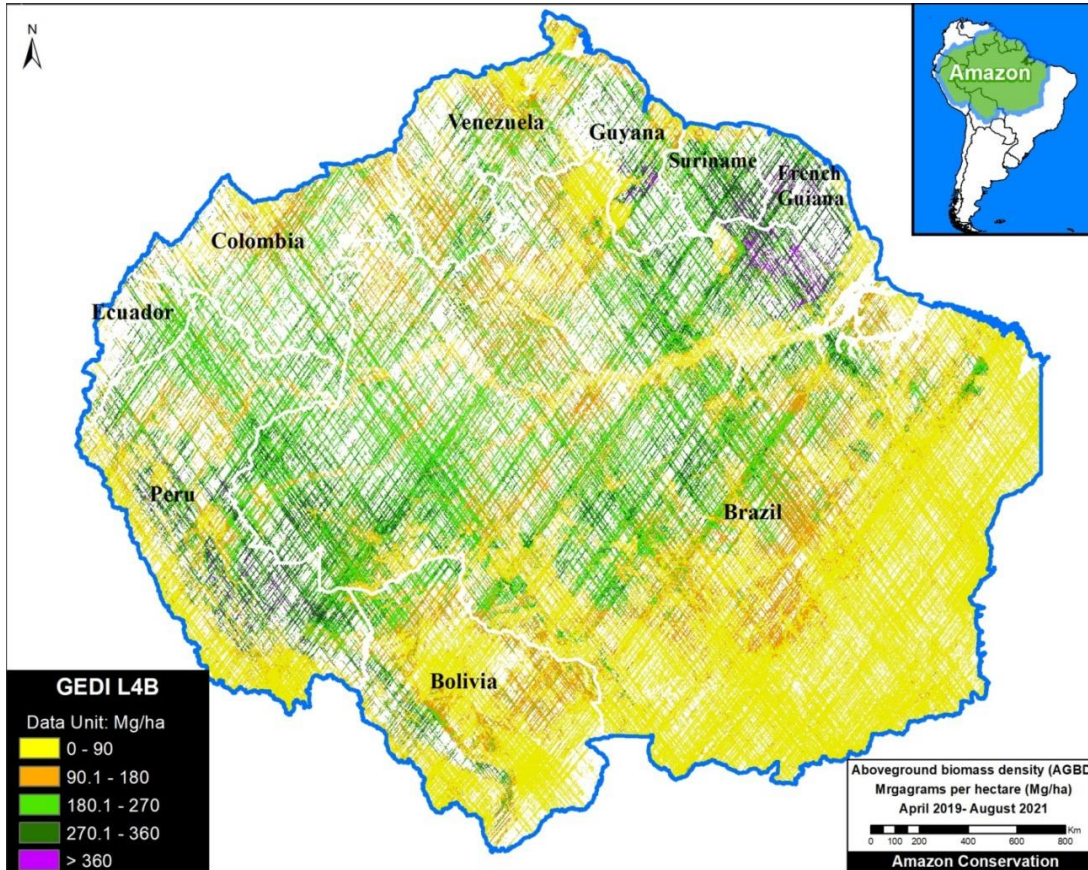
View Amazon Wide



**So, how do we
avoid the tipping
points?**

View Amazon Wide

**Protect the Core
Stop Deforestation**

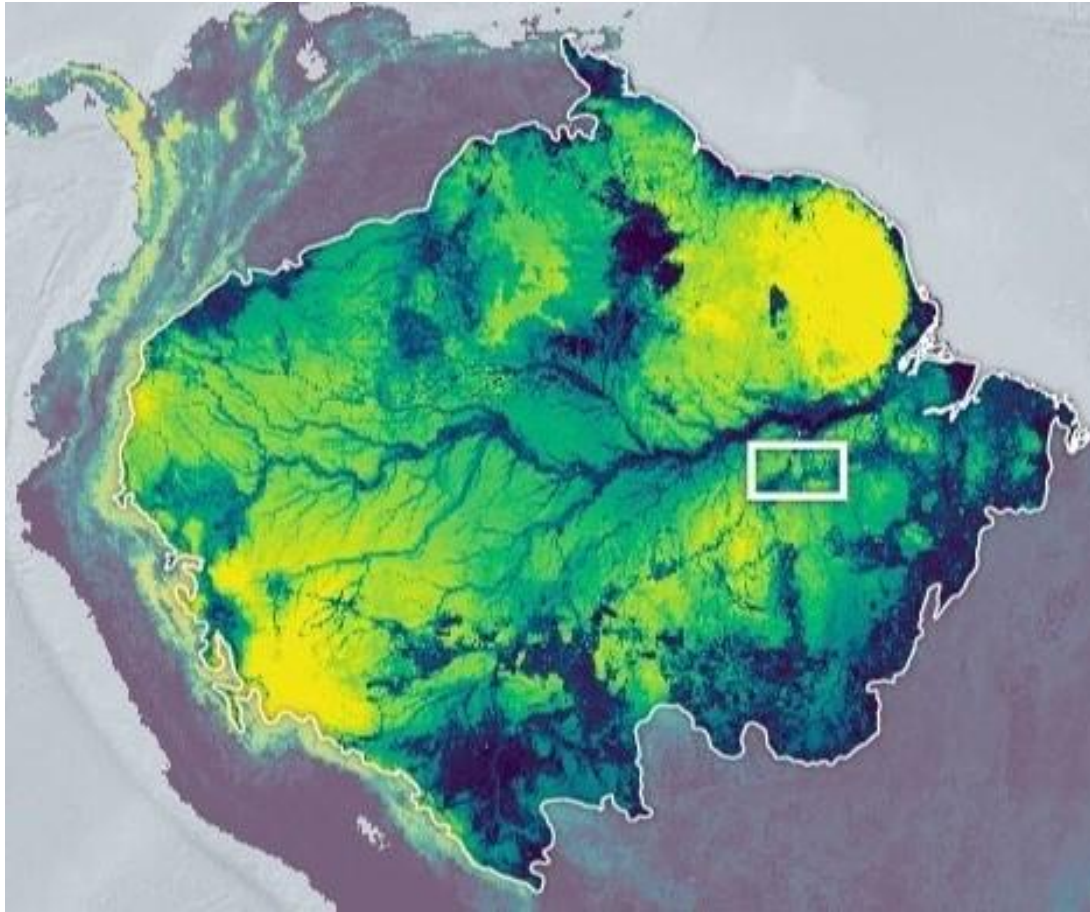


So, how do we avoid the tipping points?

View Amazon Wide

**Protect the Core
Stop Deforestation**

Utilize Tech



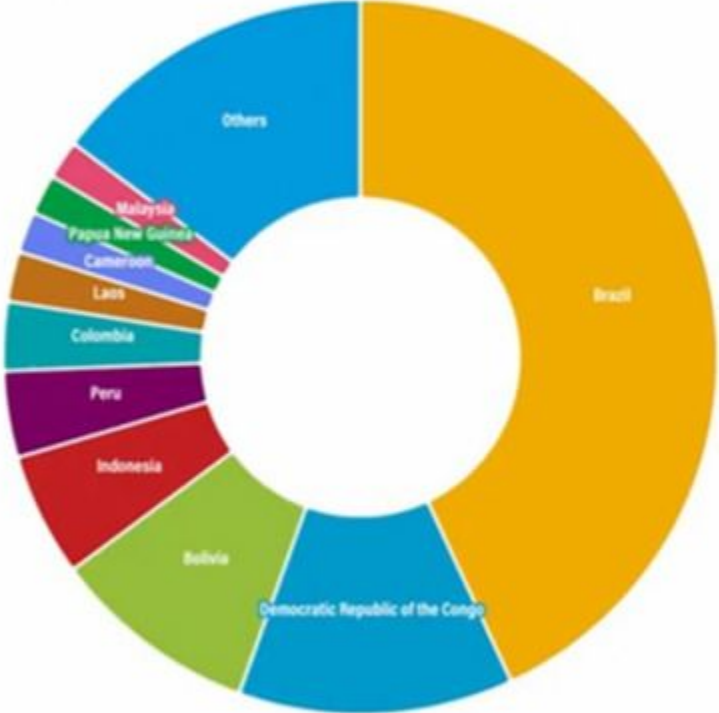
**So, how do we
avoid the tipping
points?**

View Amazon Wide

**Protect the Core
Stop Deforestation**

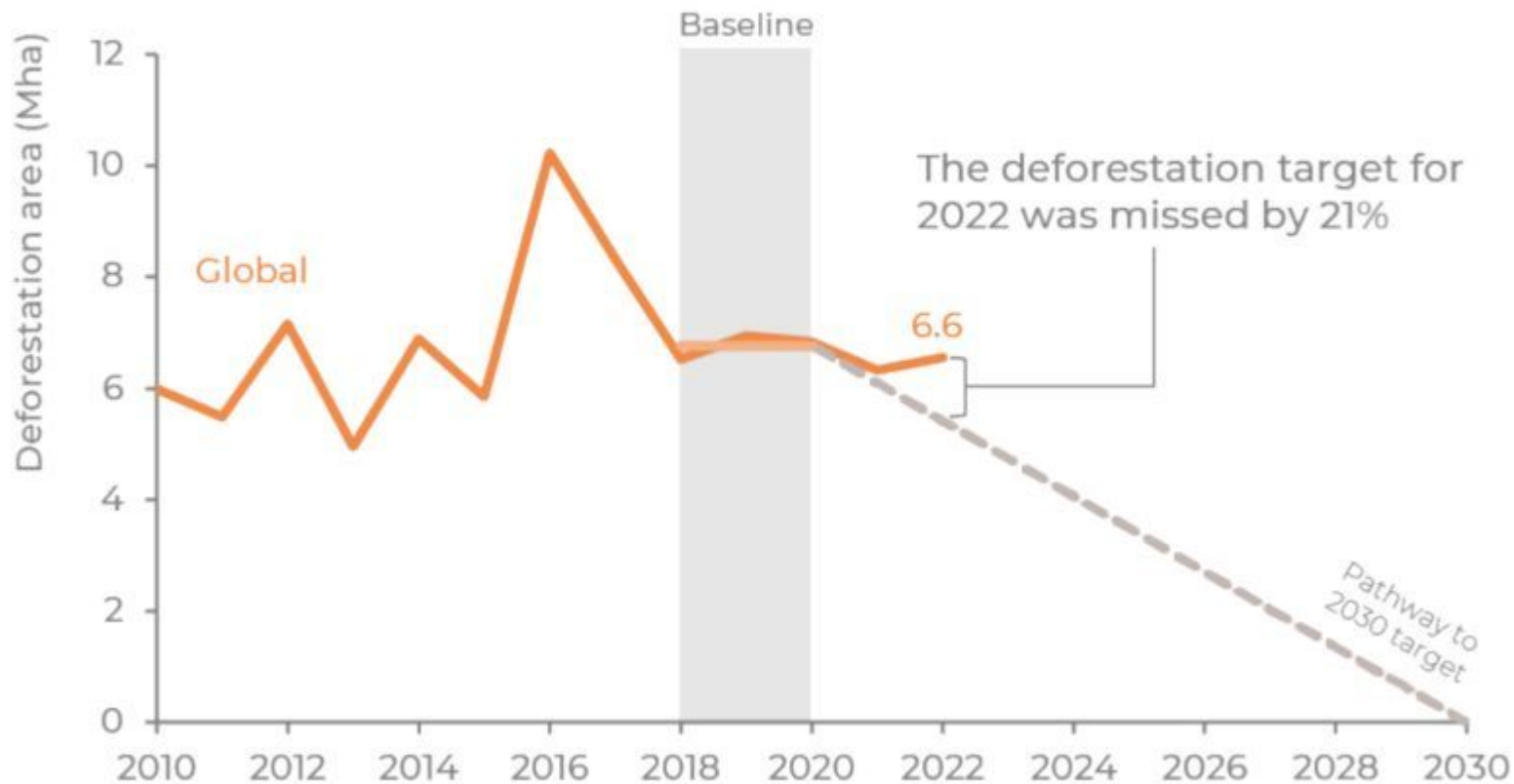
Utilize Tech

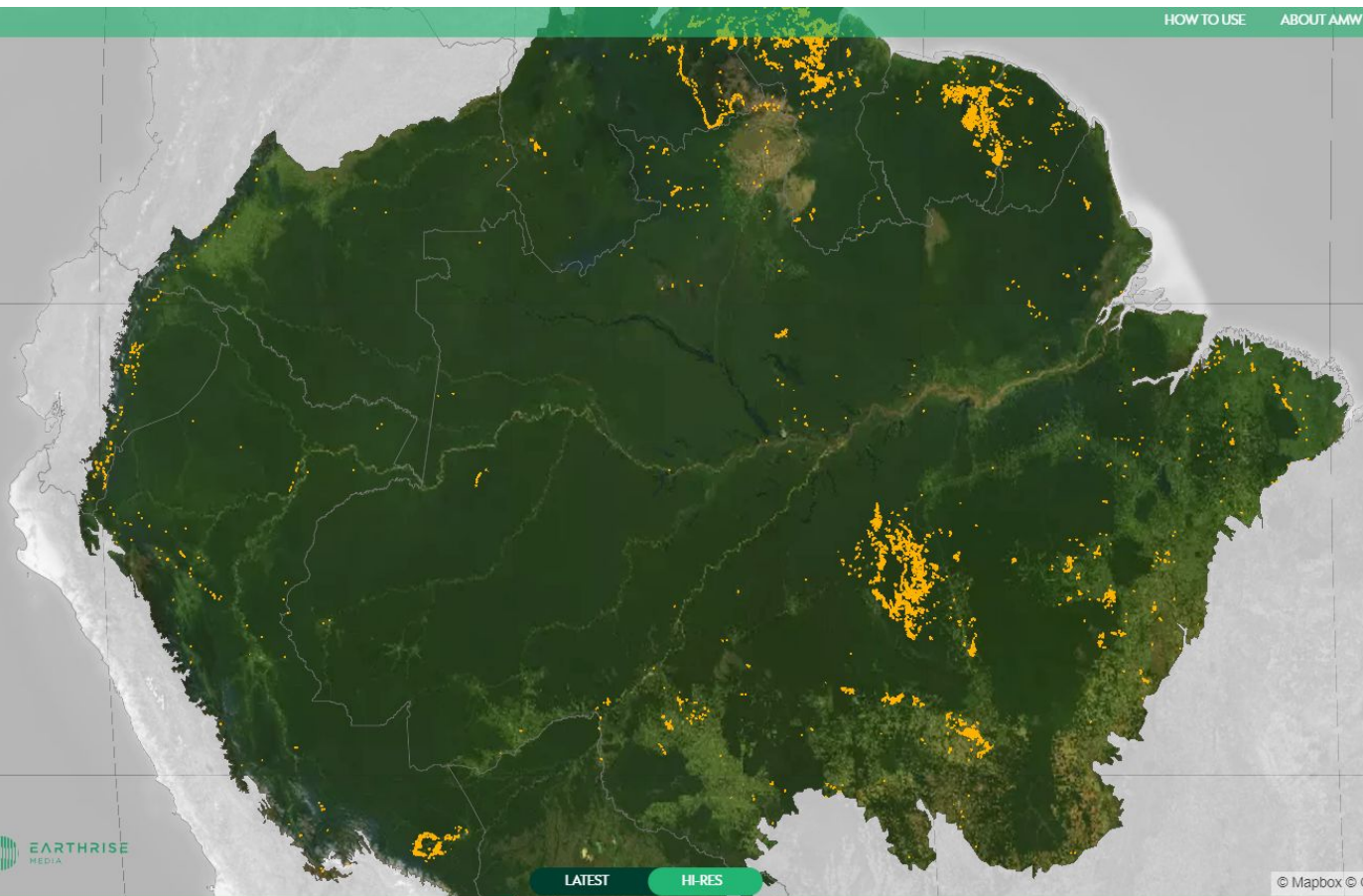
Top countries for primary forest loss by area in 2022



WORLD RESOURCES INSTITUTE

Figure 1.1. Global deforestation between 2010 and 2022, in million hectares





LATEST

HI-RES

© Mapbox © C



- FOREST CHANGE
- LAND COVER
- LAND USE
- CLIMATE
- BIODIVERSITY
- EXPLORE
- SEARCH
- MY GFW

LEGEND **ANALYSIS**

Soy planted area

- Soy planted area

Displaying Soy planted area in 2022 ▾

PLANET SATELLITE IMAGERY (TROPICS) ▾



